



# Developer Day 2024 Wastewater Room

Dovestone Reservoir



Water for the North West

## What we know.....

- In January 2023 DEFRA recommended that Schedule 3 is enacted in 2024
- Unitary Authority or County Council will be the SuDS Advisory Body
- SuDS will be mandatory, and a national Standard will be set
- WASCs will be statutory consultee where there is a proposed Surface water discharge to public sewer
- Exemption's expected to be developments less than 100m2
- The public consultation note that one of the main barrier is lack of skills
- Since the new Labour government appointed there has been no further communications



# Schedule 3 Flood and water management Act



Department  
for Environment  
Food & Rural Affairs

## What will the public consultation cover?

- **Policy**
  - Section 42 & Schedule 3 in parallel?
  - Define what is and isn't covered by SAB Approval
  - Process & Transitional arrangements
  - Enforcement
- **Standards & Guidance**
  - (expected to be CIRIA SuDS Manual and Non-Statutory technical standards)
  - Other documents will need updating
- **Costs & Funding**
  - Cost To set up
  - Cost to run SAB
  - Cost of operation & Maintenance
- **Skills & Capabilities**
  - Upskilling requirements

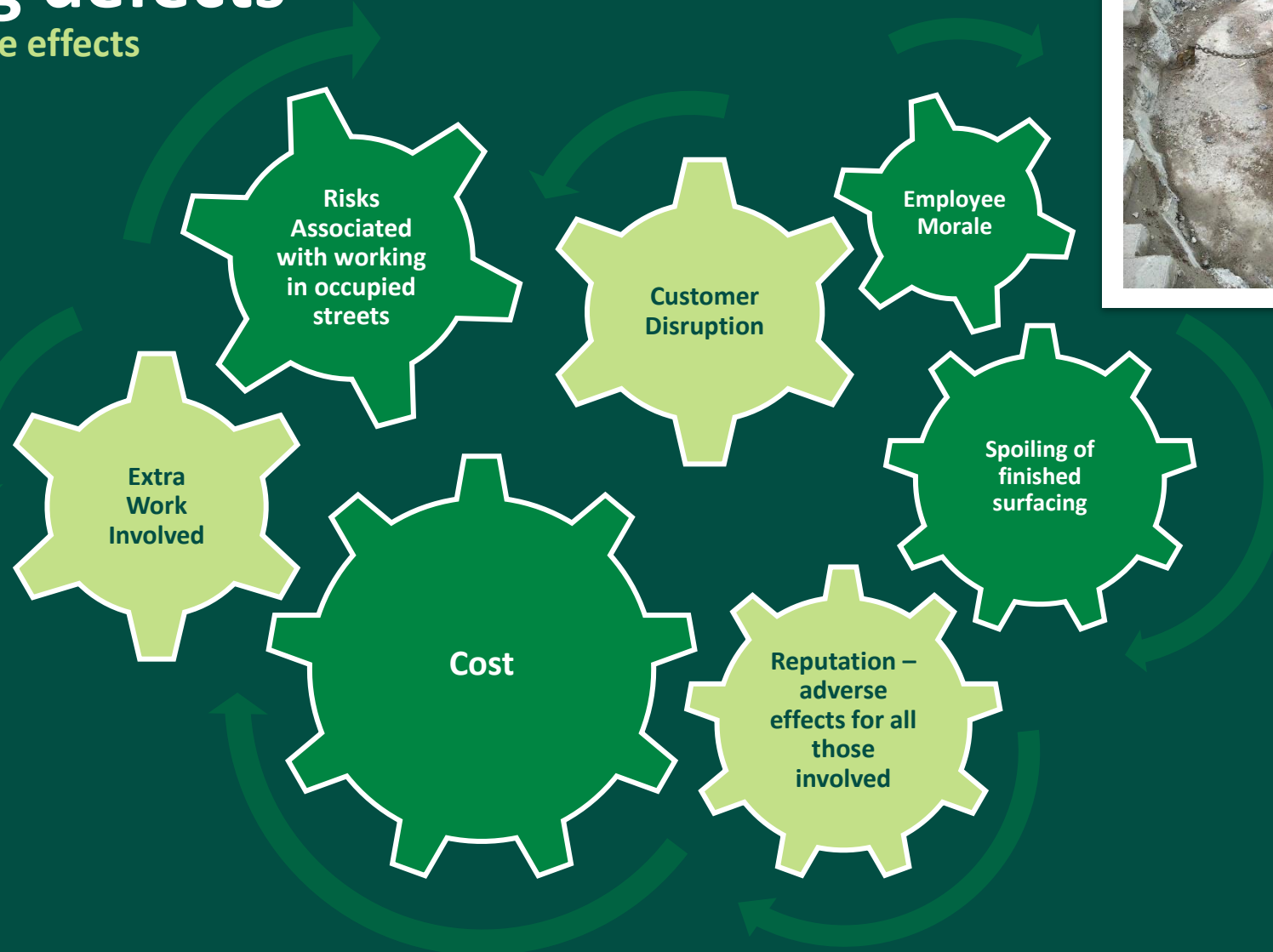
# Top tips: Site construction

Lucy Clarke



# Correcting defects

Some of the adverse effects



# Manhole Construction

Connections must connect at soffit to soffit level



Velcro  
to reverse



Let's work together to do the right thing

Connections need to be swept and accessible

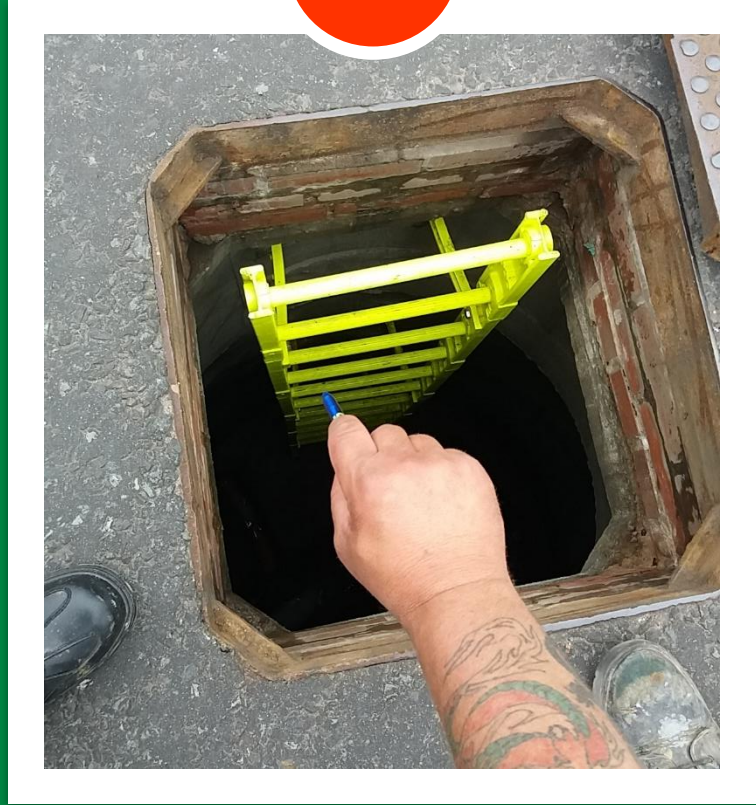


# Positioning over cover slabs

## Ladders

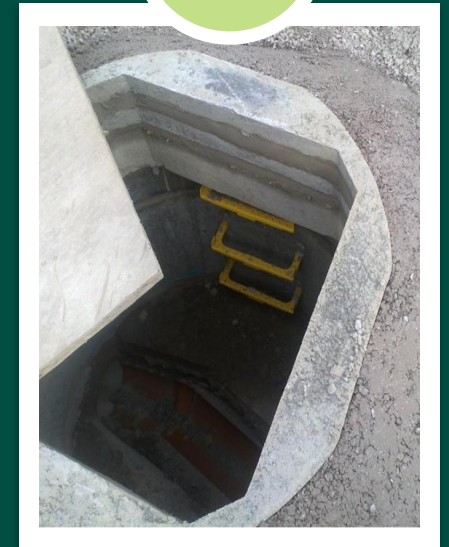
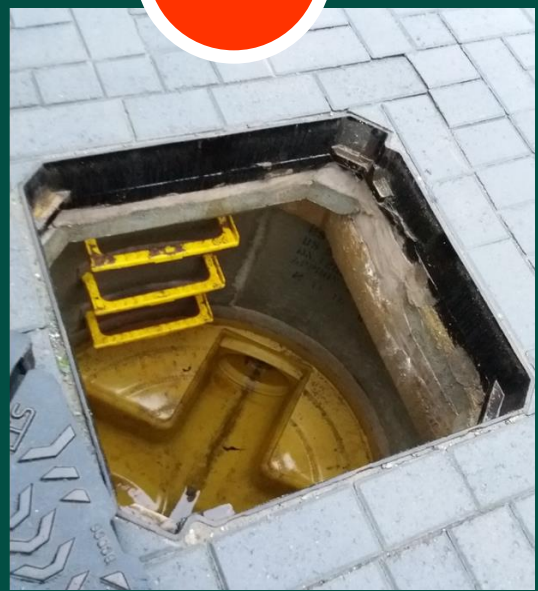
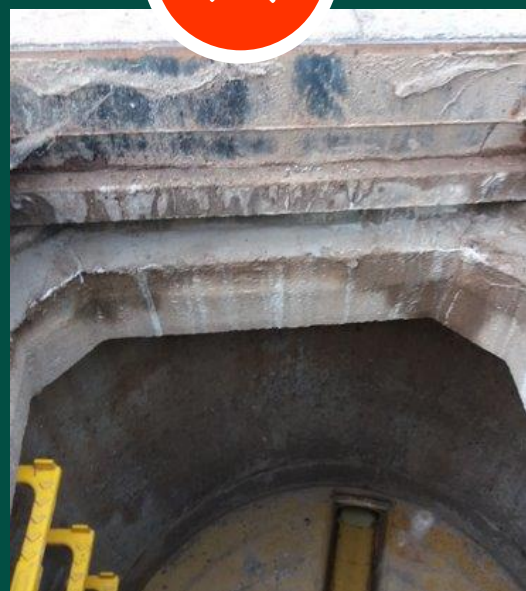


To maintain a 600 x 600mm square clear opening, the step rungs or ladders must be plumb and in alignment with the cover slab opening



Let's make  
it happen

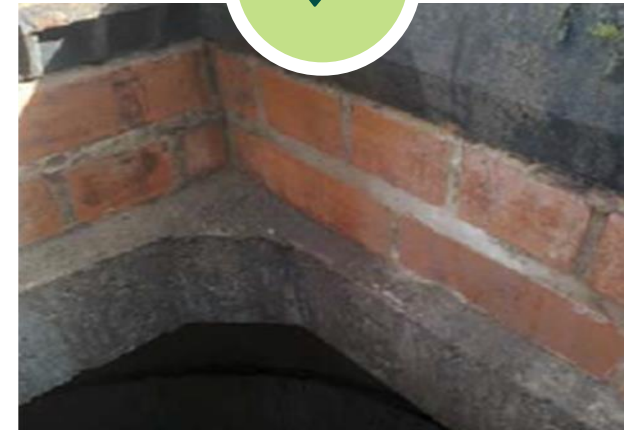
# Raising pieces



# Adjusting brickwork



Step rings must not be constructed in adjusting brickwork openings





# Manhole cover frames

## Common problems



Developer Services Wastewater

TECHNICAL FORUM

# Wastewater Technical Update

Robert Glynn - Digital Product Delivery Lead

Technology Services

Robert.Glynn@uuplc.co.uk



# What is Telemetry? Why is it important?



## What is Telemetry?

Telemetry is a system that enables the remote visibility of the status of our assets.



## What does it do?

Telemetry automatically collects, transmits and measures data from remote sources, using sensors and other devices to collect data.

It uses communication systems to transmit the data back to a central location. Subsequently, the data is analyzed and can be used to monitor and control the remote system.



## Why is it important?

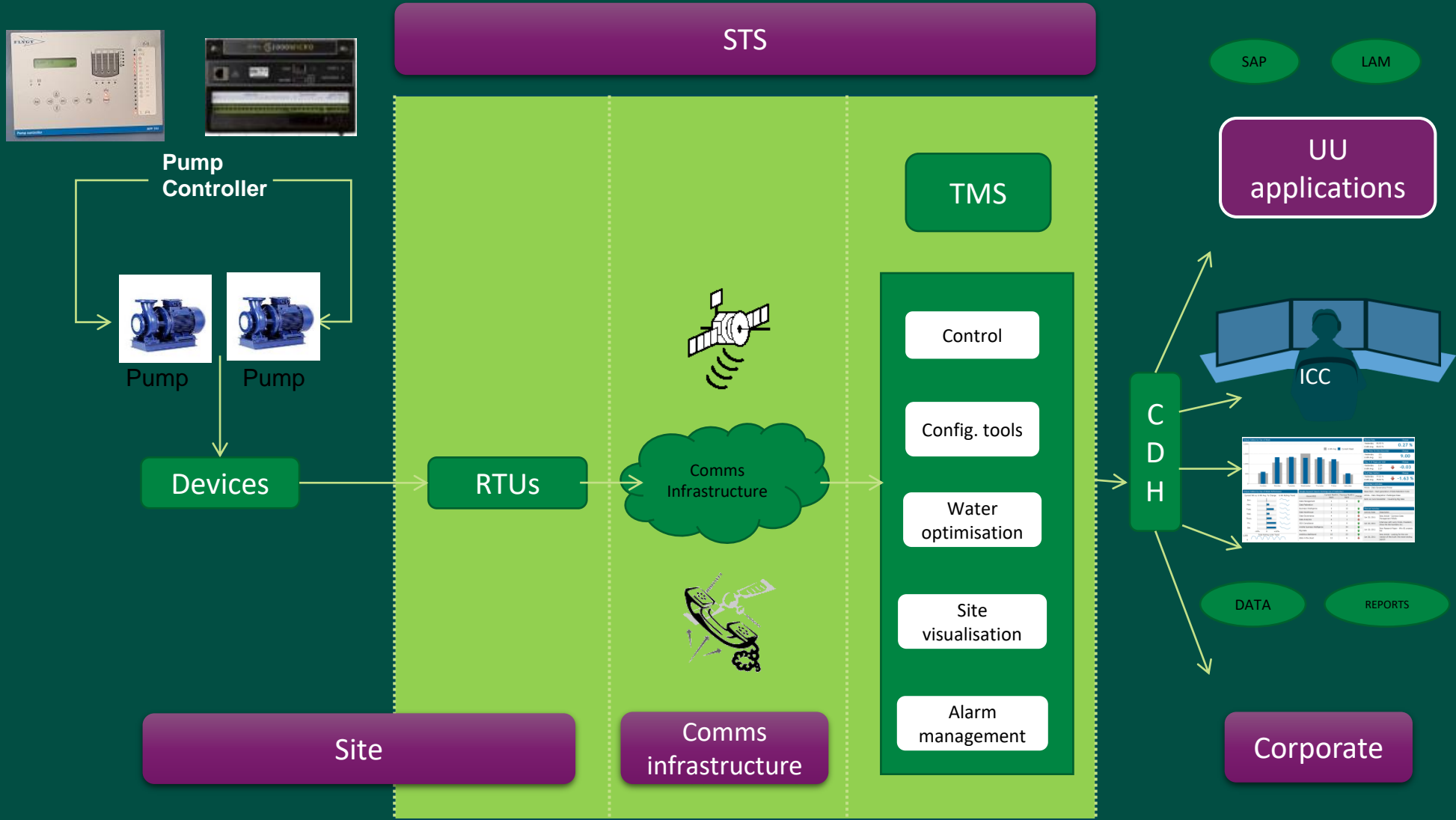
This system enables the automatic notification of issues as soon as they arise at a remote site. For example if a pump trips the systems tells us back at our center that the pump has tripped and enables us to organise a team member to attend site to rectify this.



## Why is it important to you?

United Utilities have a number of engineering standards, some of which refer to the use of telemetry. To ensure a smooth adoption of your site, we require a compatible telemetry solution.

# Telemetry Overview



# NIS & Cyber Security

## What are the NIS Regulations?

- The directive first became UK law on **10th May 2018**.
- It is the EU-wide rules on cyber security whose objective is to achieve a high common level of security of network and information systems across the EU through improved cybersecurity capabilities at a national level and increased EU-level cooperation.
- The directive introduces the concepts of “operators of essential services (OES)”, “digital service providers (DSP)” and competent authorities (CA) with clear guidelines for the role each takes.
- Legally requires “operators of essential services” and “digital service providers” to take appropriate steps to manage security risk and to report security incidents to the national competent authorities when significant incidents take place.

Why does UU Fall under this?



UU are in scope of this on the basis that we provide potable water to more than 200,000 customers under the concept of OES

Who regulates this?



Competent Authorities (CA) will regulate each sector, the Water sector is regulated by DEFRA and DWI

What we have to do



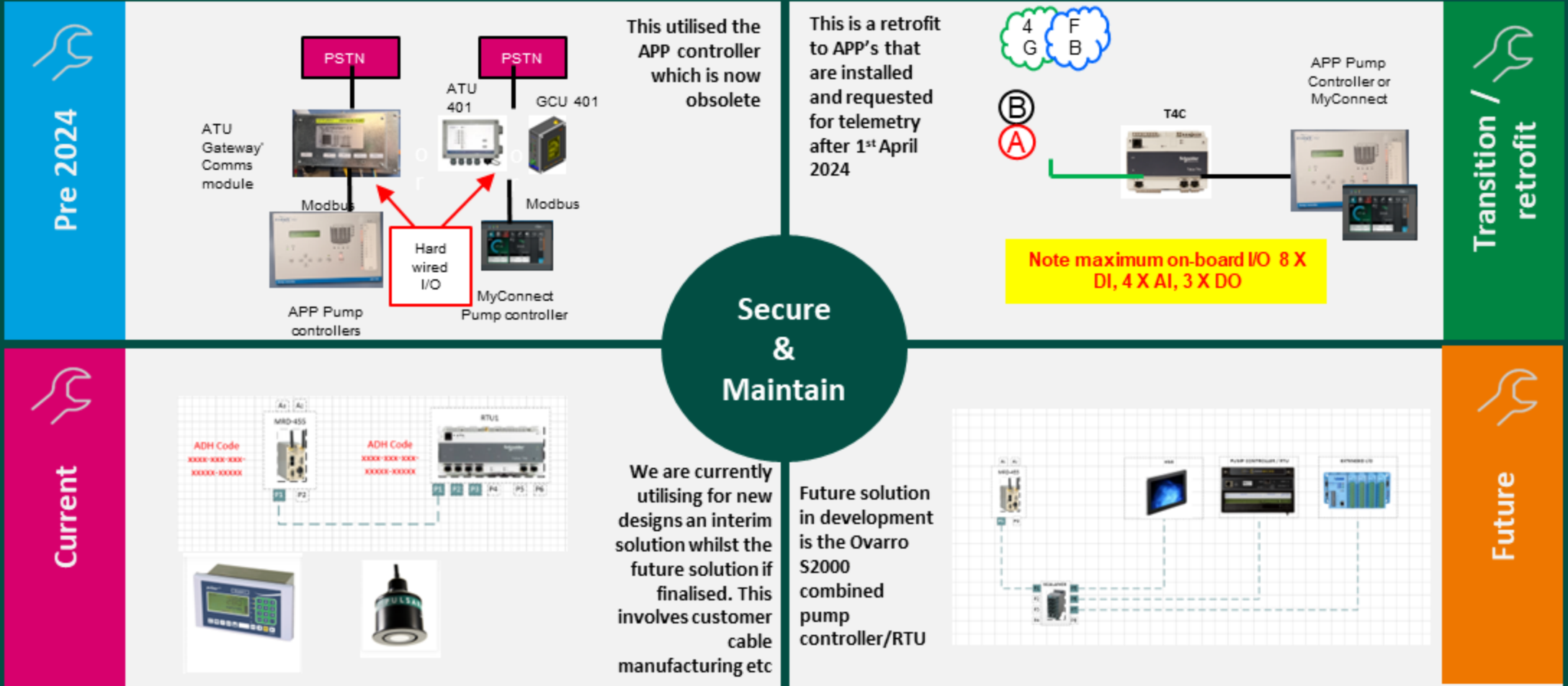
We are mandated to take appropriate and proportionate technical and organization measures to manage the risk posed. There are 14 principles (each with multiple measures) that will provide the basis for applicable security measures.

Who decides on these matters?

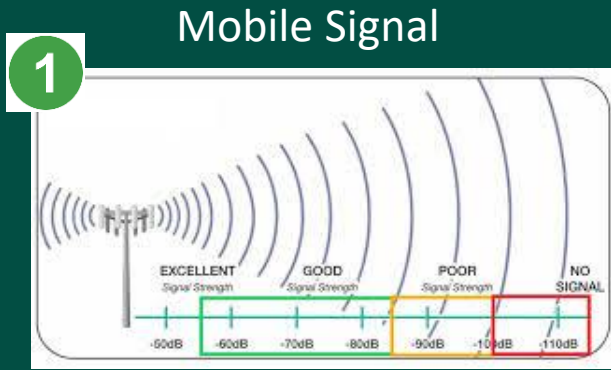


These are defined by the NCSC and are adapted to each essential service in conjunction with the relevant CA

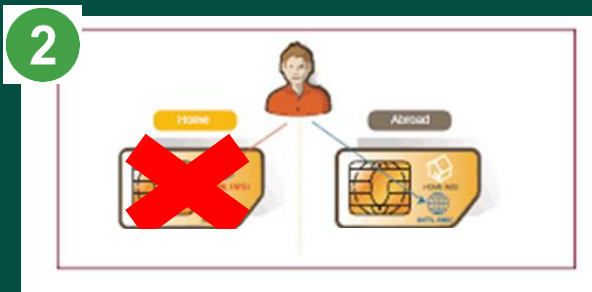
# Telemetry Technology Evolution



# Common Telemetry Issues



## What are we doing about it?



## What can you do to support us?

3

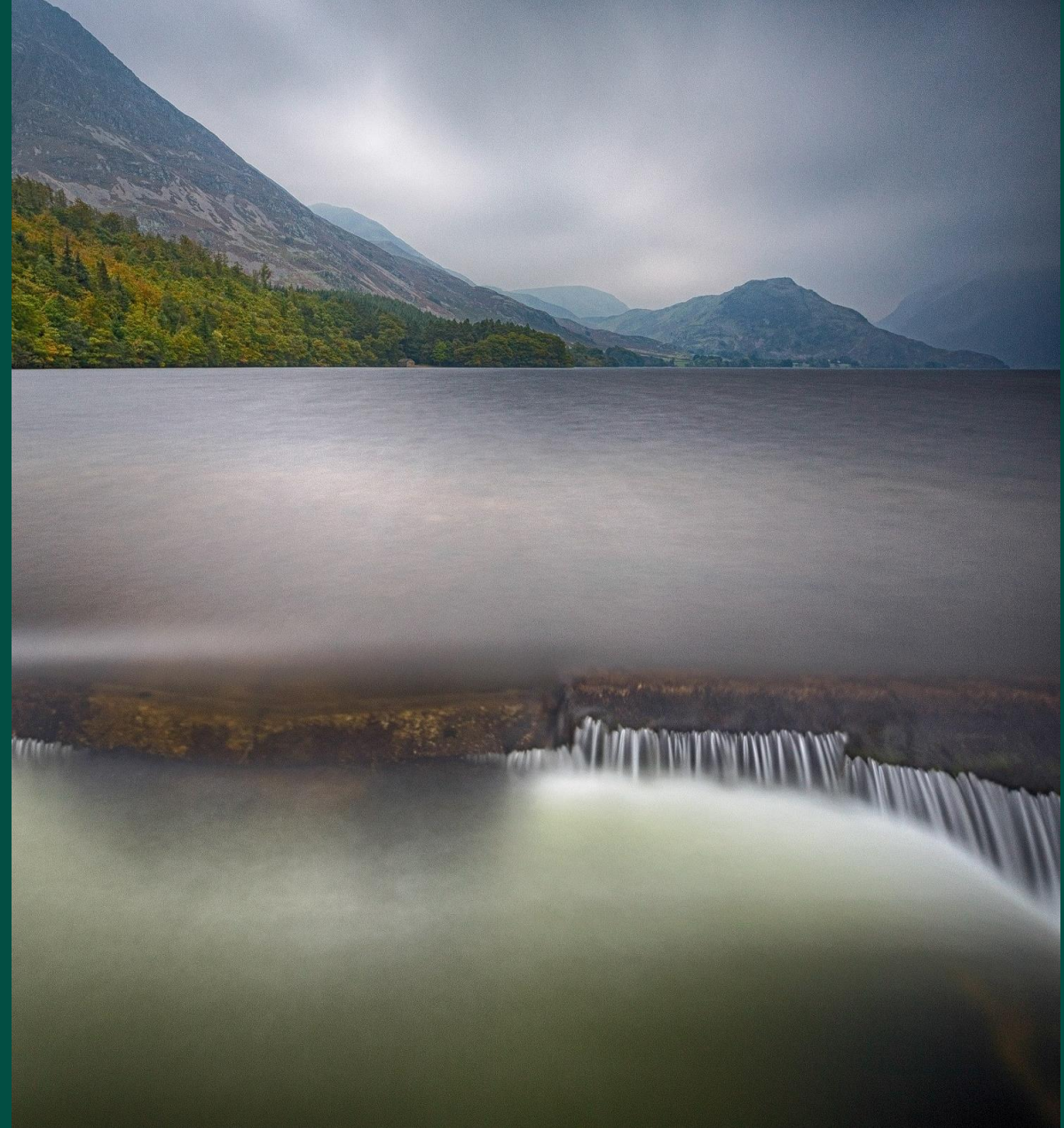
When registering phone lines, please ensure the address you register them against is that of the kiosk

4

Please do not plug the phone line back into the UU equipment, our telemetry team will do this when ready

# Pre-Development Enquiry Update

Gulshan Seetulparsad  
Developer Services Engineer





# Predevelopment Enquiry Form; Customer Feedback



Lots of Information

What you want to know gets lost.

It generates more questions

## WASTEWATER PRE-DEVELOPMENT ENQUIRY



United Utilities Grasmere House, 2nd Floor  
Lingley Mere Business Park  
Great Sankey  
Warrington  
WA5 3LP

10/09/2024

Dear Mr Jones,

Pre-Development Enquiry Lingley Mere Warrington UU Reference Number: 987456

We have assessed your application based on the information provided. This pre-development advice on your drainage strategy will be valid for 12 months. Your strategy will need review by other authorities as part of the planning process. We advise conducting necessary site investigations to confirm viability of your proposals.

### Modelled Flood Risk

I can confirm that we modelled flood risk within the vicinity of the proposed development. And currently flood at SJ60856504 by 23m<sup>3</sup>

Please note that our modelling data is indicative, and only representative of the 1:100year storm event.

[Please see comment 2 of the attached guidance sheet](#)

### Asset Protection

According to our public sewer records, there are public sewers located within your site boundary. This requires an easement of 6m. If you cannot achieve the required clearance, you may wish to consider diverting and or abandoning the public sewer.

[Please see comment 3 of the attached guidance sheet and Working Near Our Pipelines Guidance document](#)

### Foul Water

Foul flow from this site will be allowed to drain into the public foul water/combined sewer system.

Our preferred point of discharge would be to the north of your proposed development at an unrestricted rate.

Manhole reference SDSF0001, Grid reference 385756 385764

### Surface Water

Follow the National Planning Policy Guidance drainage hierarchy and provide evidence for discounting higher options before considering public sewer discharge. Consult the Lead Local Flood Authority regarding surface water concerns.

[Please see comment 4 within the guidance sheet](#)

## WASTEWATER PRE-DEVELOPMENT ENQUIRY



### Infiltration

[Please see comment 4 within the guidance sheet](#)

### Waterbody

If an [evidence based](#) assessment has been carried out and confirms that infiltration is not feasible, we recommend that you contact the Lead Local Flood Authority and/or Environment Agency to discuss a point of discharge to the Brook located in the site boundary of the proposed site.

We would encourage you to engage with any third-party landowner and riparian owner to agree access and discharge rights to the water body if this is not in your ownership.

### Public Sewer

United Utilities will consider a connection to the 300mm diameter public surface water [within Daniels Road](#) located South of the proposed site at a pass forward flow to be agreed by the Lead Local Flood Authority. United Utilities requests that any agreed rate does not exceed 5l/s.

Manhole reference SDSF5645, Grid reference 385754 385698

### Site Image



## WASTEWATER PRE-DEVELOPMENT ENQUIRY



### Foul & Surface water connection point



### Flooding Location





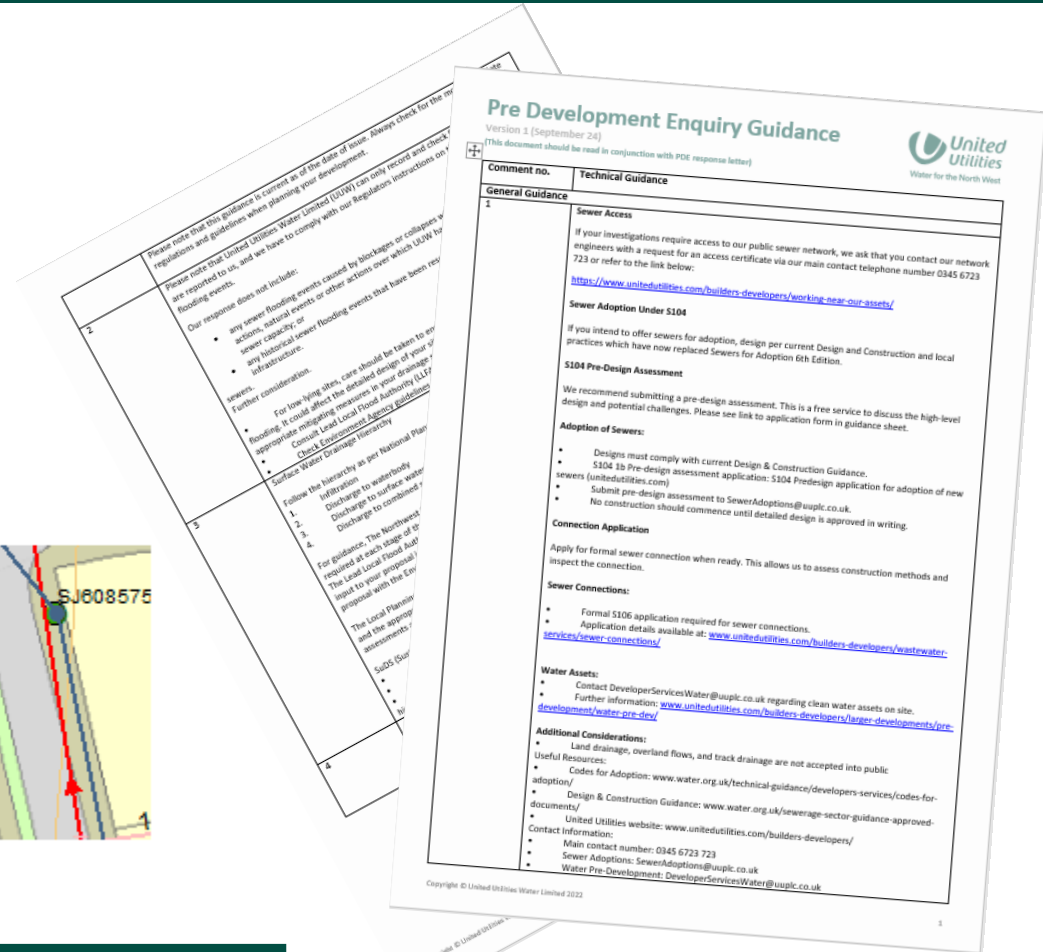
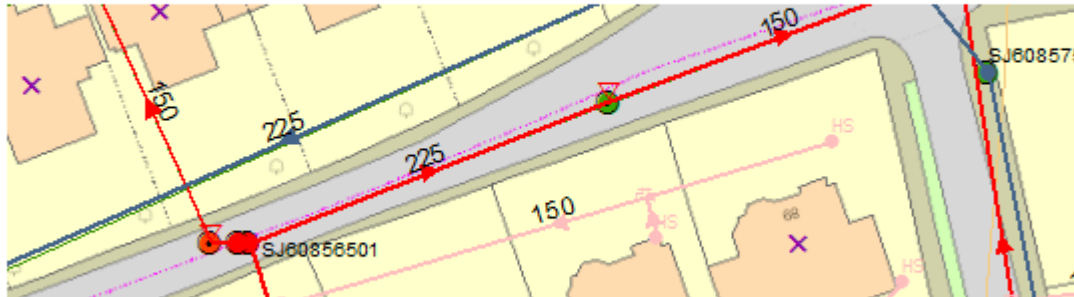
Images we will provide

# Additional we provide

## Foul & Surface water connection point



## Flooding Location



Further Guidance linked through to comments